

The background of the entire page is a high-resolution image of a stone wall. The stones are irregular in shape and size, with a mix of brown, tan, and grey tones. They are laid in a traditional running bond pattern, with visible mortar joints. The lighting creates shadows that emphasize the rough, natural texture of the stone.

# STONE<sup>®</sup>wiz

Architectural Cladding. Elegant Living

**Manufactured Architectural Stone Cladding**

## EUROPEAN LEDGE

✉ [contactus@stonewiz.in](mailto:contactus@stonewiz.in)

🌐 [www.stonewiz.in](http://www.stonewiz.in)





**EUROPEAN LEDGE-SOLANO BROWN**



**EUROPEAN LEDGE-PEARL**



**EUROPEAN LEDGE-SILVERTON**



**EUROPEAN LEDGE-MOUNTAIN BROWN**



**EUROPEAN LEDGE-RAINFOREST**

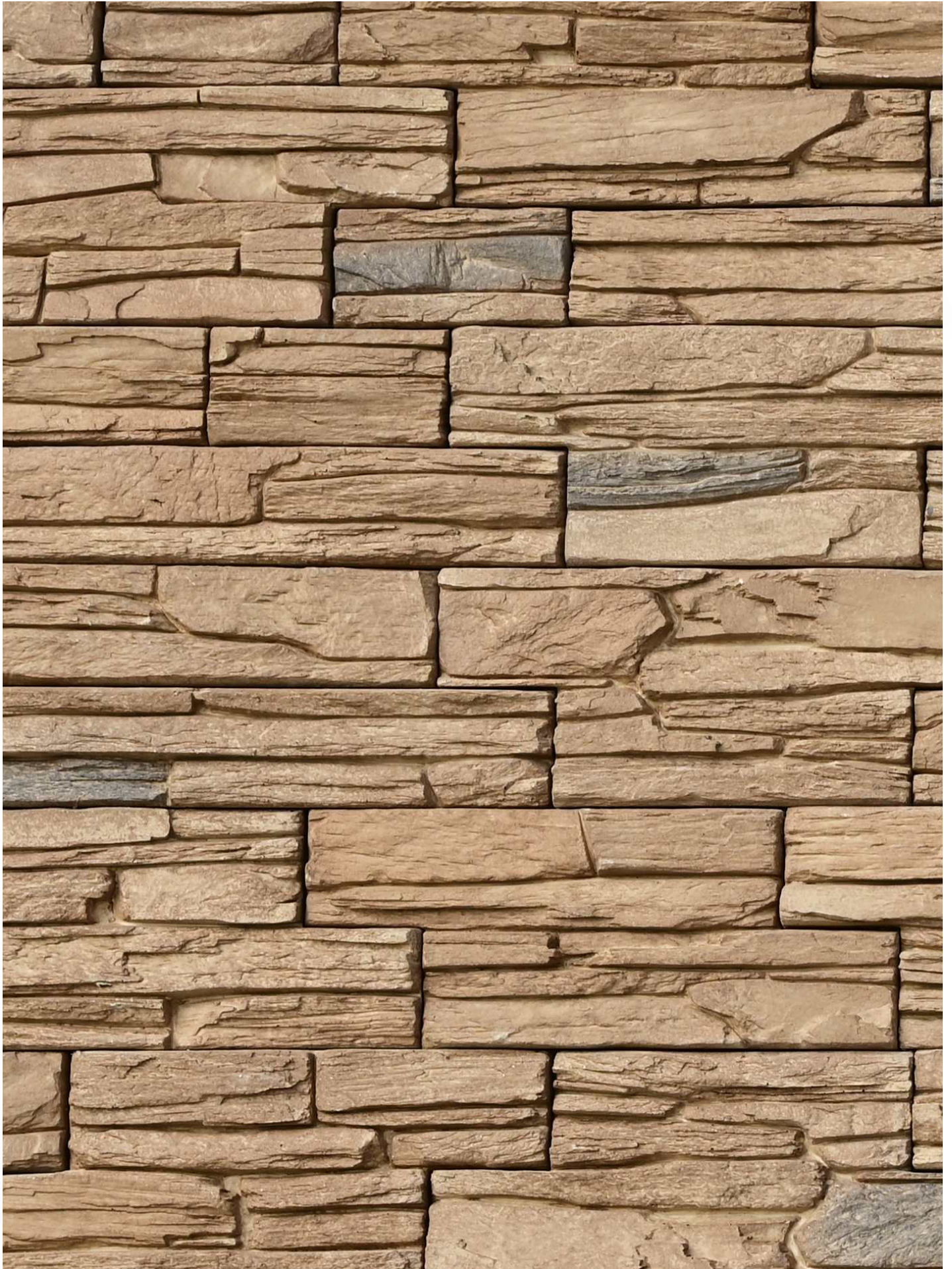
MANUFACTURED STONE CLADDING IS A MAN-MADE PRODUCT CREATED TO RESEMBLE NATURAL STONE. IT OFFERS SEVERAL ADVANTAGES OVER NATURAL STONE, INCLUDING COST-EFFECTIVENESS, LIGHTER WEIGHT, EASIER INSTALLATION, AND A WIDE RANGE OF DESIGN OPTIONS.

EUROPEAN LEDGE DESIGN BY STONEWIZ IS CRAFTED TO CAPTURE THE CHARM AND CHARACTER OF TRADITIONAL EUROPEAN LEDGE STONE. IT TYPICALLY FEATURES IRREGULAR SHAPES AND VARYING SIZES OF STONES, WITH A TEXTURED SURFACE AND REALISTIC COLOR VARIATIONS. THE GOAL IS TO REPLICATE THE ORGANIC APPEAL OF NATURAL STONE WHILE OFFERING THE BENEFITS OF A MANUFACTURED PRODUCT.

ARCHITECTS, DESIGNERS, AND BUILDERS OFTEN CHOOSE EUROPEAN LEDGE DESIGN FOR BOTH EXTERIOR AND INTERIOR APPLICATIONS. IT CAN BE USED TO ENHANCE THE FACADE OF BUILDINGS, ACCENTUATE COLUMNS AND PILLARS, CREATE STUNNING FIREPLACES, OR ADD TEXTURE TO INTERIOR WALLS.

STONEWIZ'S EUROPEAN LEDGE DESIGN IS KNOWN FOR ITS DURABILITY, WEATHER RESISTANCE, AND LOW MAINTENANCE REQUIREMENTS. AS A MANUFACTURED PRODUCT, IT IS ENGINEERED TO WITHSTAND THE ELEMENTS AND MAINTAIN ITS APPEARANCE OVER TIME.





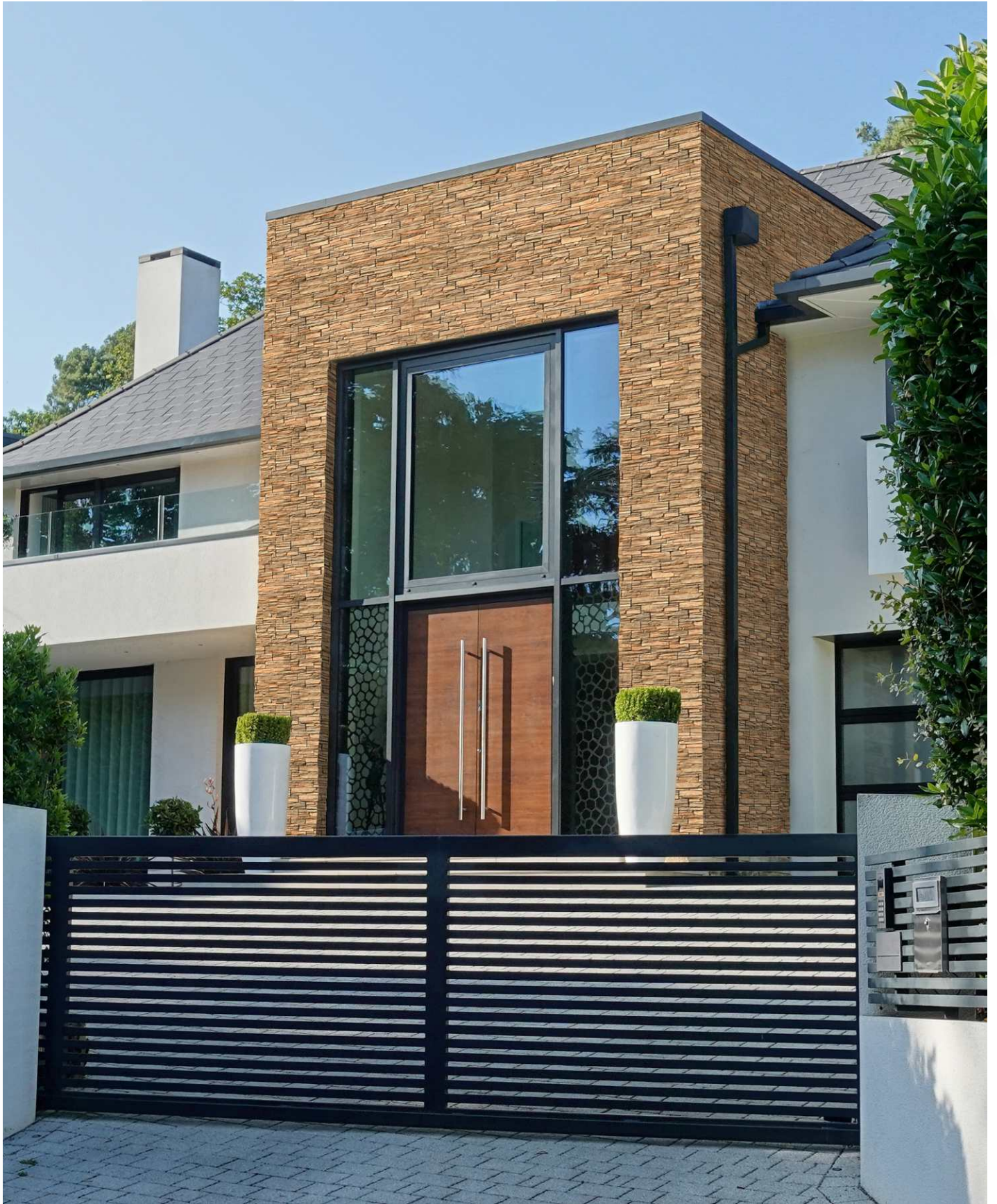
**EUROPEAN LEDGE-SOLANO BROWN**





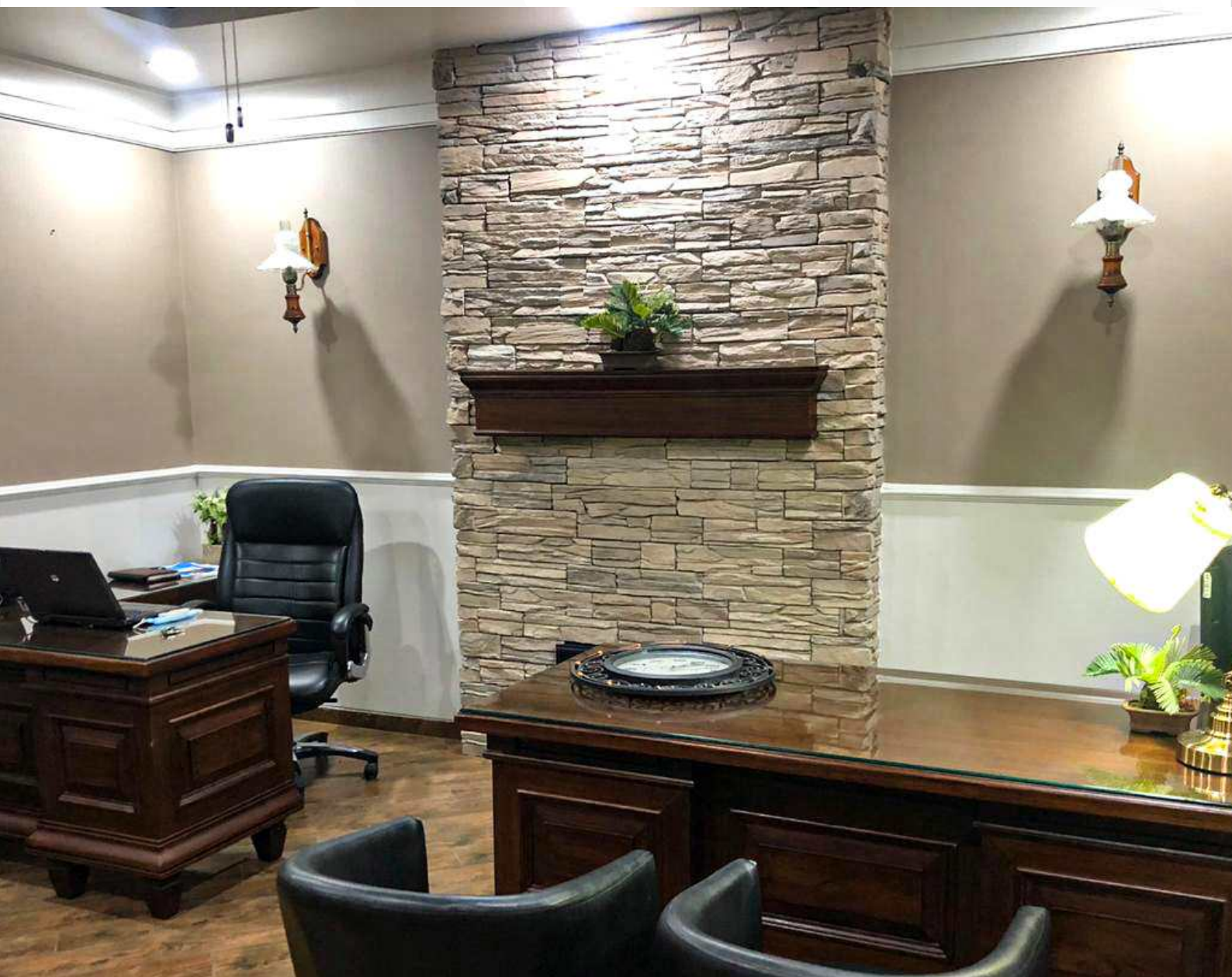
**EUROPEAN LEDGE-SOLANO BROWN**





**EUROPEAN LEDGE-SOLANO BROWN**





EUROPEAN LEDGE-PEARL





**EUROPEAN LEDGE-SILVERTON**





EUROPEAN LEDGE-MOUNTAIN BROWN



EUROPEAN LEDGE-MOUNTAIN BROWN

PEAN


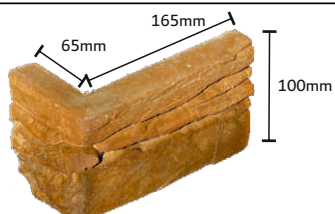







## EUROPEAN LEDGE-RAINFOREST

### SPECIFICATION (EUROPEAN LEDGE)

Flat Stone		Corner Stone		Thickness
 <p>Weight of stone: 4 kg per sq. ft (Approx.)</p>		 <p>Area covered per running feet= 0.75 sq. ft.</p>		 <p>30mm to 35 mm</p>
Area Per Box (sq.ft.)	7.00	Area Per Box (rft.)	7.87	
Weight Per Box (kgs.)	29	Weight Per Box (kgs.)	30	